

India's Largest manufacturer of Capacitor Discharge Welding Machines

Capacitor Discharge (CD) Projection Welding

Advantages

- The best in aesthetics
- Significantly lower Kva
- Freedom from post weld processes and costs
- Totally leak proof welds
- Requires no water cooling
- Run it on Genset. Yes!
- Weld dissimilar surfaces
- Lower day-to-day running cost
- Weld heat sensitive parts
- Consistent current delivery



See Inside



NEW LAUNCH
Inverter Stud Welder



Stud Welding Machines

Capacitor Discharge (CD) Projection Welding

Artech offers advanced and highly capable range of products that serves vast range of welding applications from 500 to 40,000 wattseconds/joules. In addition to standard machines, Artech has developed over 100+ tailor-made CD Projection welding machines to suit the specific needs of various applications.



1000 Joules



7500 Joules



9500 Joules



19000 Joules

Features

- Compact, ergonomic designs
- Digital, Micro-controller based controls
- Password protection for changing weld parameters



Automobile



- Fuel Tank Ring Welding
- Oil Filter Top Plate Welding
- Rotor Fan Welding
- Seat Component Welding
- Shock Absorber leak proof Welding
- Sintered Pulley
- Stabilizer Bar Welding
- Window Regulator/ Seat Adjusters
- Braided Copper Wire Welding
- Projection Nut/Bolt Welding



Stainless Steel Components (Impellers, Control Panels, Kitchenware etc.)



- Peg Measure Welding
- SS Impeller and Diffuser
- Handle Welding on Cookers
- U-type Hinge Projection Welding
- SS Mounting Bracket Welding
- Projection Welding of Bracket



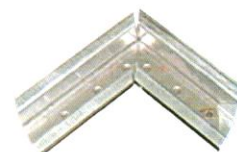
Leak Proof Welds



- Bush Welding
- Semiconductor
- SS Round Nut Welding
- Oil Port Welding
- Shock Absorber
- SS Tube Welding on Solid SS Cube/Sheet



Hollow Metal Door



- End C channel Welding
- Anchor Plate Welding
- Vision Panel Welding
- Hinge Reinforcement Welding
- Stiffener Welding
- Lock Re-inforcement Welding

Capacitor Discharge (CD) Stud Welding

Capacitor Discharge Stud welding is a fast, economical and semi-automatic welding process used to weld studs/fasteners of various diameters on a base metal, without making holes. Artech's CD Stud welding technology completely eliminates the need for all the secondary operations such as drilling, punching or riveting to affix studs and fasteners.



CD 1100
Stud welding range - M3 to M8



CD 2100
Stud welding range - M3 to M8

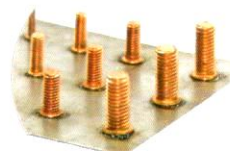
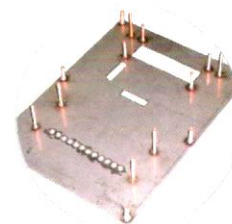
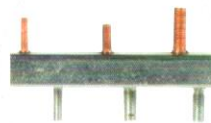
Advantages

- Stud diameter < 8 mm
- Thin, lightweight parent material
- Welding dissimilar metals
- High strength bonds
- Studs with pip type projection
- Uniform high welding quality
- Requires no re-working on the other side of weld

Features

- Password protection
- Display and keyboard to set parameters
- Weld counter

Applications



Industries

- Automobile
- Control Panels
- Farm Equipment
- Elevator Panels
- Shipbuilding
- Cookware & Kitchenware
- Sound Proof Canopies
- Electro-static Precipitator
- Cabinets and Racks
- Super Market Display
- Steel Furniture
- Insulation

Drawn Arc Stud Welding

Drawn arc stud welding is a highly efficient method of attaching fasteners primarily to mild steel and stainless steel by utilizing a constant current DC power supply.

The welding process uses a welding rectifier which serves as an energy source and provides continuous welding current. The welding time can be adjusted from 10 to 500 milliseconds.



AR 5100
Stud welding range - M4 to M12



AR 8100
Stud welding range - M8 to M16

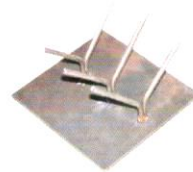
Advantages

- Stud diameter > 8 mm
- Heavy parent material
- Strong, one sided weld
- High speed welding
- Welds on slightly oil, scaly material
- High duty cycle
- Requires no flux or filler

Features

- Password protection
- Alpha-numeric text display
- Fine adjustment of weld time and weld counter
- Protection against overloading of machine

Applications



Industries

- Automobile
- Control Panels
- Farm Equipment
- Elevator Panels
- Ship Building Industry
- Transformer Manufacturing
- Insulation in Shipbuilding
- Boiler Industry
- Power Plants
- Automobile Industry

artech

Trusted World Over

📍 **Artech Welders Private Limited**
A-24/1, H- Block, MIDC, Pimpri, Pune,
Maharashtra 411 018, India.

☎ +91 20 2747 6160, +91 20 2746 2771 / 72

✉ sales@artechwelders.com

🌐 www.artechwelders.com